

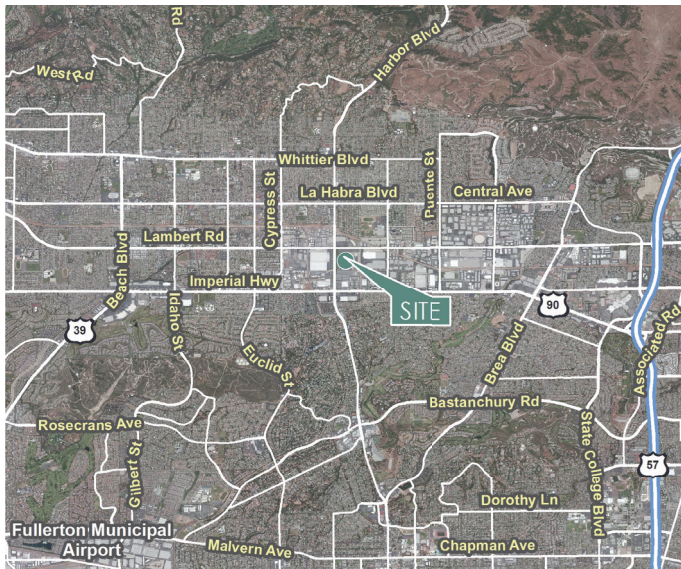
141,616 SF

Industrial Space For Lease



Prologis Beckman Business Center

4260 N. Harbor Boulevard
Fullerton, CA 92835



LOCATION

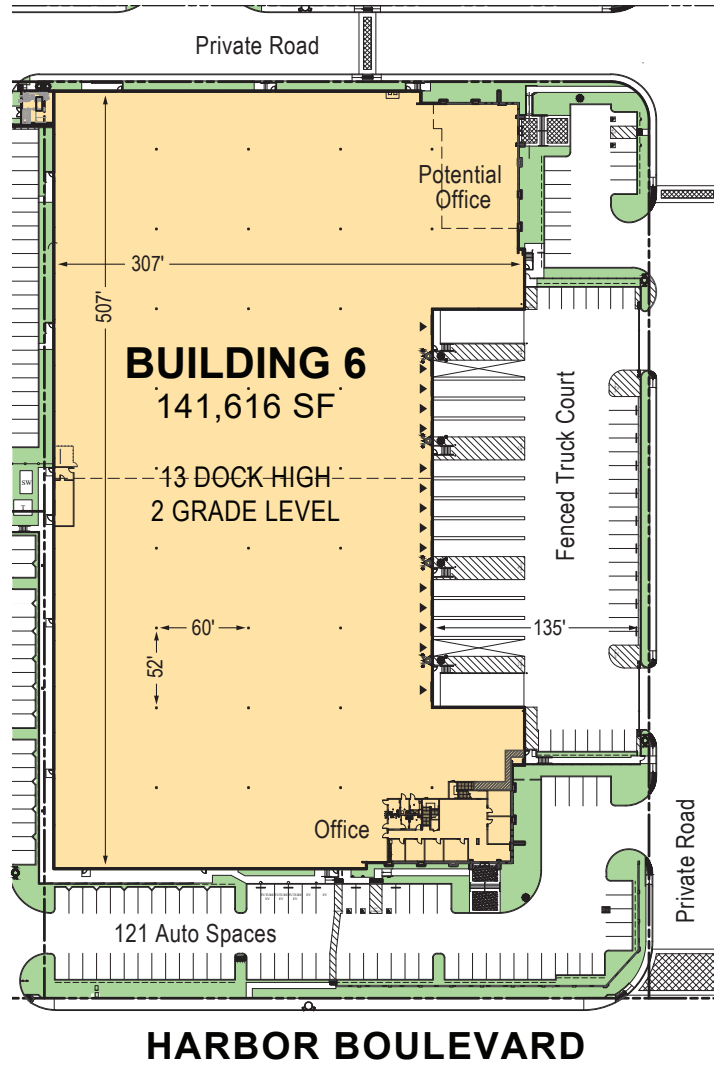
- High Image Industrial Business Park
- Excellent Access to the 57, 60 and 91 Freeways
- Harbor Blvd Street Frontage
- Corner Location at Signalized Intersection

FACILITY

- New State of the Art Freestanding Distribution Building
- 6,365 SF of HVAC Office Area
- 13 Dock High Loading Doors (9'x10')
- 2 Ground Level Loading Doors (12'x14')
- Secured Fenced Yard Area
- 32' Warehouse Clear Height
- ESFR Sprinkler System (K17 @ 52 PSI)
- 121 Parking Stalls
- 2,000 Amps 277/480 Volt Electrical Service
- 6" Thick Concrete Truck Apron
- Excellent Building Signage

141,616 SF

Industrial Space For Lease



Voit Real Estate Services

Seth Davenport

sdavenport@voitco.com

ph +1 714.935.2376

Lic#01413387

2400 E. Katella Avenue, Ste. 750
Anaheim, CA 92806

Voit Real Estate Services

Mitch Zehner

mzehner@voitco.com

ph +1 714.935.2307

Lic#00882464

2400 E. Katella Avenue, Ste. 750
Anaheim, CA 92806A

Voit Real Estate Services

Michael Hefner

mhefner@voitco.com

ph +1 714.935.2331

Lic#00857352

2400 E. Katella Avenue, Ste. 750
Anaheim, CA 92806

Prologis

Parker Hutchison

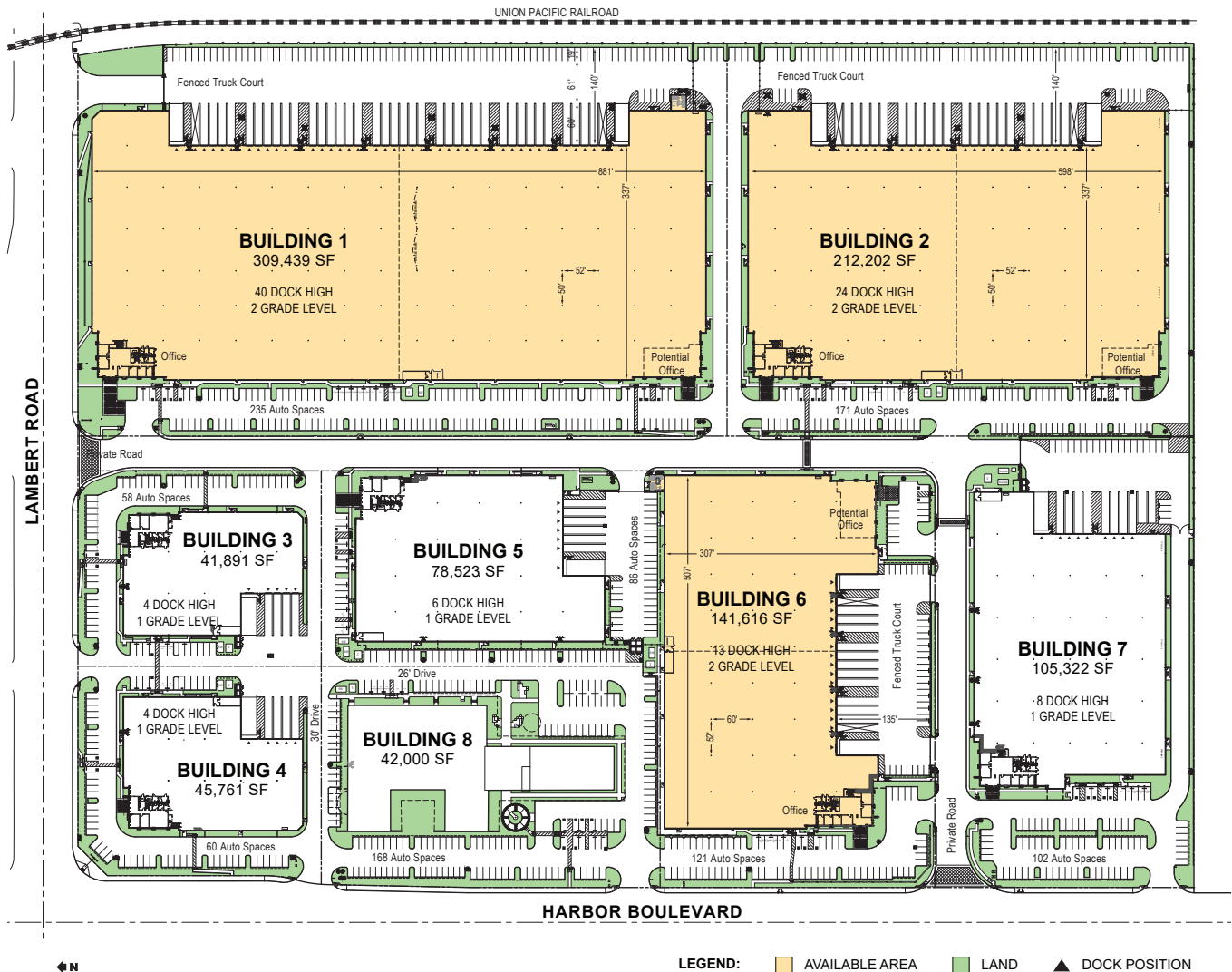
phutchison@prologis.com

ph +1 562.345.9209

17777 Center Court Dr. N, Ste. 100
Cerritos, CA 90703

141,616 SF

Industrial Space For Lease



Voit Real Estate Services

Seth Davenport
sdavenport@voitco.com
ph +1 714.935.2376
Lic#01413387
2400 E. Katella Avenue, Ste. 750
Anaheim, CA 92806

Voit Real Estate Services

Mitch Zehner
mzehner@voitco.com
ph +1 714.935.2307
Lic#00882464
2400 E. Katella Avenue, Ste. 750
Anaheim, CA 92806A

Voit Real Estate Services

Michael Hefner
mhefner@voitco.com
ph +1 714.935.2331
Lic#00857352
2400 E. Katella Avenue, Ste. 750
Anaheim, CA 92806

Prologis

Parker Hutchison
phutchison@prologis.com
ph +1 562.345.9209
17777 Center Court Dr. N, Ste. 100
Cerritos, CA 90703