

# FOR SUBLEASE ±14,367 SF

## FREESTANDING INDUSTRIAL BUILDING ON 0.85 ACRES

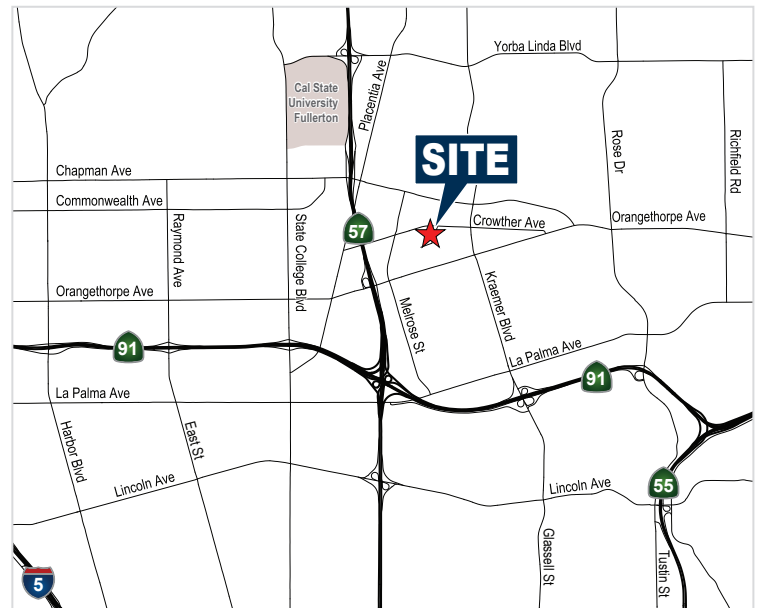
500 Porter Way, Placentia, CA



### DOCK HIGH LOADING

#### Property Features

- 14,367 SF Freestanding Industrial Building on 0.85 Acres
- 1,700 SF of Office Space
- Two (2) Dock High Doors
- One (1) Grade Level Door
- 400 Amps of 277/480 Volt Power (verify)
- Sublease Through 11/30/2019 with Longer Term Possible
- 18' Minimum Warehouse Clearance
- Fire Sprinklers
- Excellent Access to 57 and 91 Freeways
- Business Park Environment



#### MIKE VERNICK, CCIM, SIOR

Senior Vice President, Partner

714.935.2354

Lic. # 01420885

mvernick@voitco.com

**Voit**  
REAL ESTATE SERVICES

**HV**  
HEFNER  
VERNICK  
TEAM

2400 E. Katella Ave., Suite 750, Anaheim, CA 92806 • 714.978.7880 • 714.978.9431 Fax

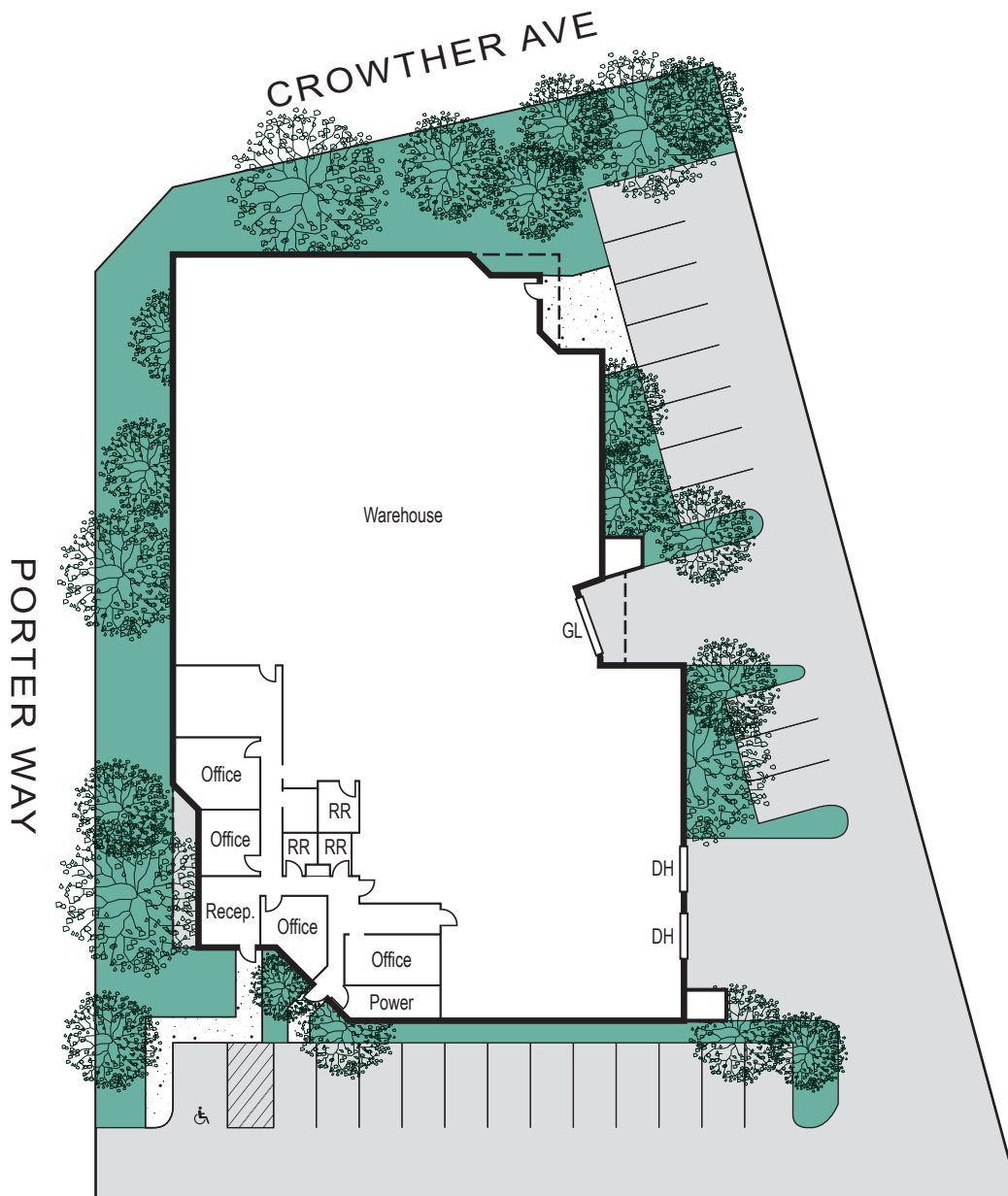
www.VoitCo.com | www.HefnerVernickTeam.com

Licensed as Real Estate Broker by the CA Bur of Real Estate. The information contained herein has been obtained from sources we deem reliable. While we have no reason to doubt its accuracy, we do not guarantee it. ©2018 Voit Real Estate Services, Inc. All Rights Reserved. Lic. #01991785

# FOR SUBLEASE ±14,367 SF

## FREESTANDING INDUSTRIAL BUILDING ON 0.85 ACRES

500 Porter Way, Placentia, CA



### MIKE VERNICK, CCIM, SIOR

Senior Vice President, Partner

714.935.2354

Lic. # 01420885

mvernick@voitco.com

**Voit**

REAL ESTATE SERVICES



**HEFNER  
VERNICK  
TEAM**

2400 E. Katella Ave., Suite 750, Anaheim, CA 92806 • 714.978.7880 • 714.978.9431 Fax

[www.VoitCo.com](http://www.VoitCo.com) | [www.HefnerVernickTeam.com](http://www.HefnerVernickTeam.com)

Licensed as Real Estate Broker by the CA Bur of Real Estate. The information contained herein has been obtained from sources we deem reliable. While we have no reason to doubt its accuracy, we do not guarantee it. ©2018 Voit Real Estate Services, Inc. All Rights Reserved. Lic. #01991785