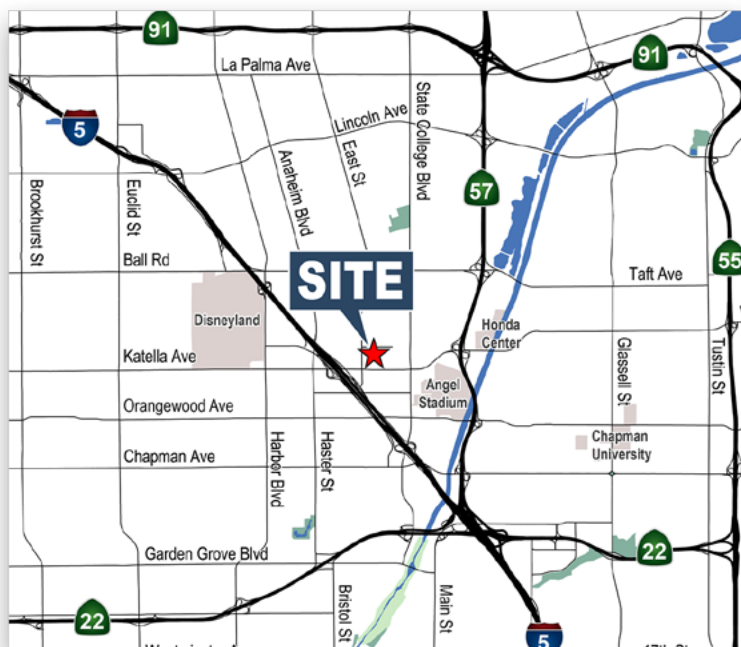


# FOR LEASE | ±10,839 SF INDUSTRIAL BUILDING

1000 E. HOWELL AVE. | ANAHEIM | CA



## FEATURES

- ± 10,839 Sq. Ft. Industrial Building
- ± 5,000 Sq. Ft. of Office Area
- High Image Building Area
- Two (2) Ground Level Doors
- Fenced Yard Area
- 800 Amps of Power
- 18' Warehouse Clearance
- Fire Sprinklered
- Prime Stadium Location

### Michael Hefner, SIOR Executive Vice President

714.935.2331  
mhefner@voitco.com  
Lic. #00857352

### Brenden Hefner Senior Associate

714.935.2326  
bhefner@voitco.com  
Lic. #02114046

2400 E. Katella Ave., Suite 750, Anaheim, California 92806  
714.978.7880 | 714.978.9431 Fax | Lic #01991785 | [www.VoitCo.com](http://www.VoitCo.com)

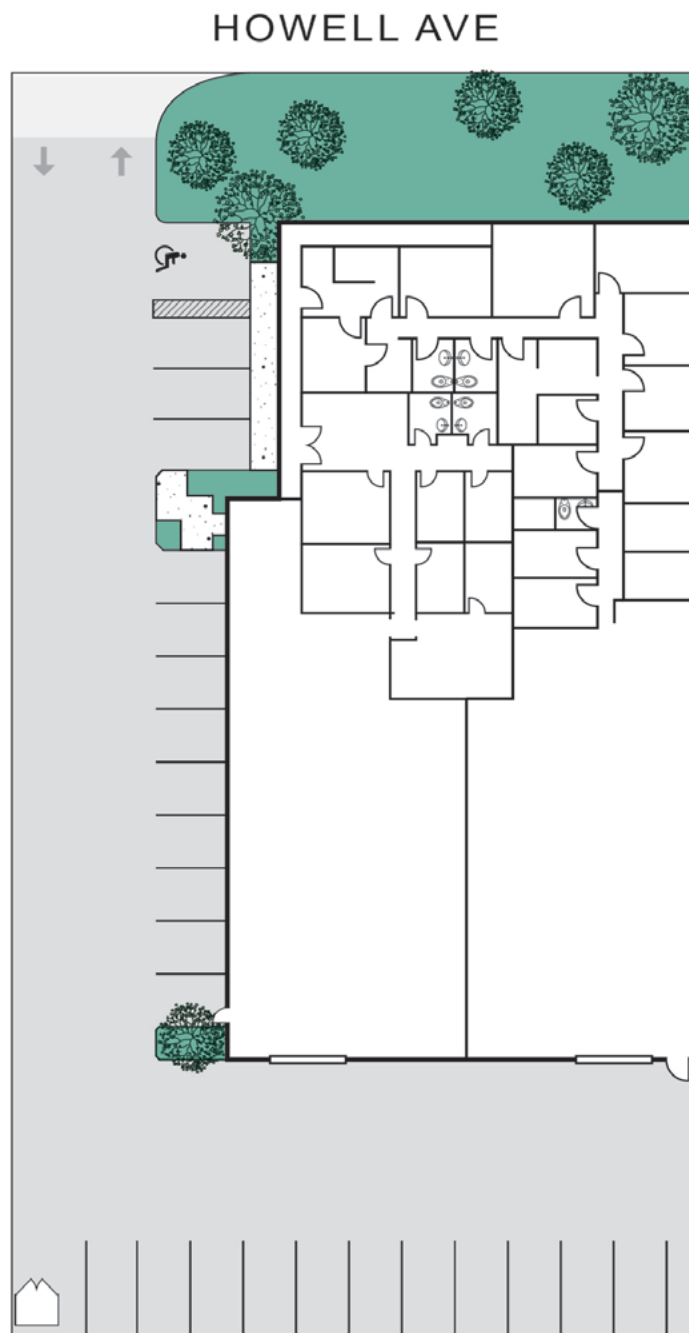
**Voit**  
REAL ESTATE SERVICES

**HV** HEFNER  
VERNICK  
TEAM

# FOR LEASE | ±10,839 SF INDUSTRIAL BUILDING

1000 E. HOWELL AVE. | ANAHEIM | CA

## SITE PLAN



\*Site plan not to scale

**Michael Hefner, SIOR**  
**Executive Vice President**

714.935.2331  
mhefner@voitco.com  
Lic. #00857352

**Brenden Hefner**  
**Senior Associate**

714.935.2326  
bhefner@voitco.com  
Lic. #02114046

**Voit**  
REAL ESTATE SERVICES



2400 E. Katella Ave., Suite 750, Anaheim, California 92806  
714.978.7880 | 714.978.9431 Fax | Lic #01991785 | [www.VoitCo.com](http://www.VoitCo.com)

The information contained herein has been obtained from sources we deem reliable. While we have no reason to doubt its accuracy, we do not guarantee it. Licensed as Real Estate Salespersons by the DRE.  
©2023 Voit Real Estate Services, Inc. All Rights Reserved. License #01991785.