

FOR LEASE

±7,970 SF

1295 S. Lewis Street, Anaheim, CA

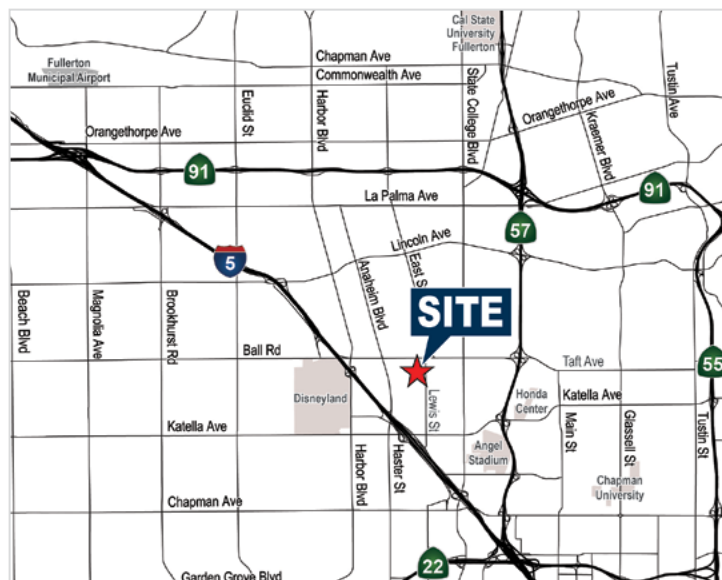
Voit

REAL ESTATE SERVICES



Property Features

- ± 7,970 Sq. Ft. High Image Building
- ± 5,000 Sq. Ft. of Executive Office Area
- 1990 Construction
- Two (2) Ground Level Doors
- 20' Minimum Warehouse Clearance
- 400 AMPS of Power
- 3:1000 Parking Ratio (unreserved)
- Fire Sprinklers
- Shop Restrooms
- Excellent Access to the 57, 5 and 22 Freeways



MIKE VERNICK, CCIM, SIOR

Senior Vice President/Partner

714.935.2354

Lic. #01420885

mvernick@voitco.com

Voit

REAL ESTATE SERVICES



HEFNER
VERNICK
TEAM

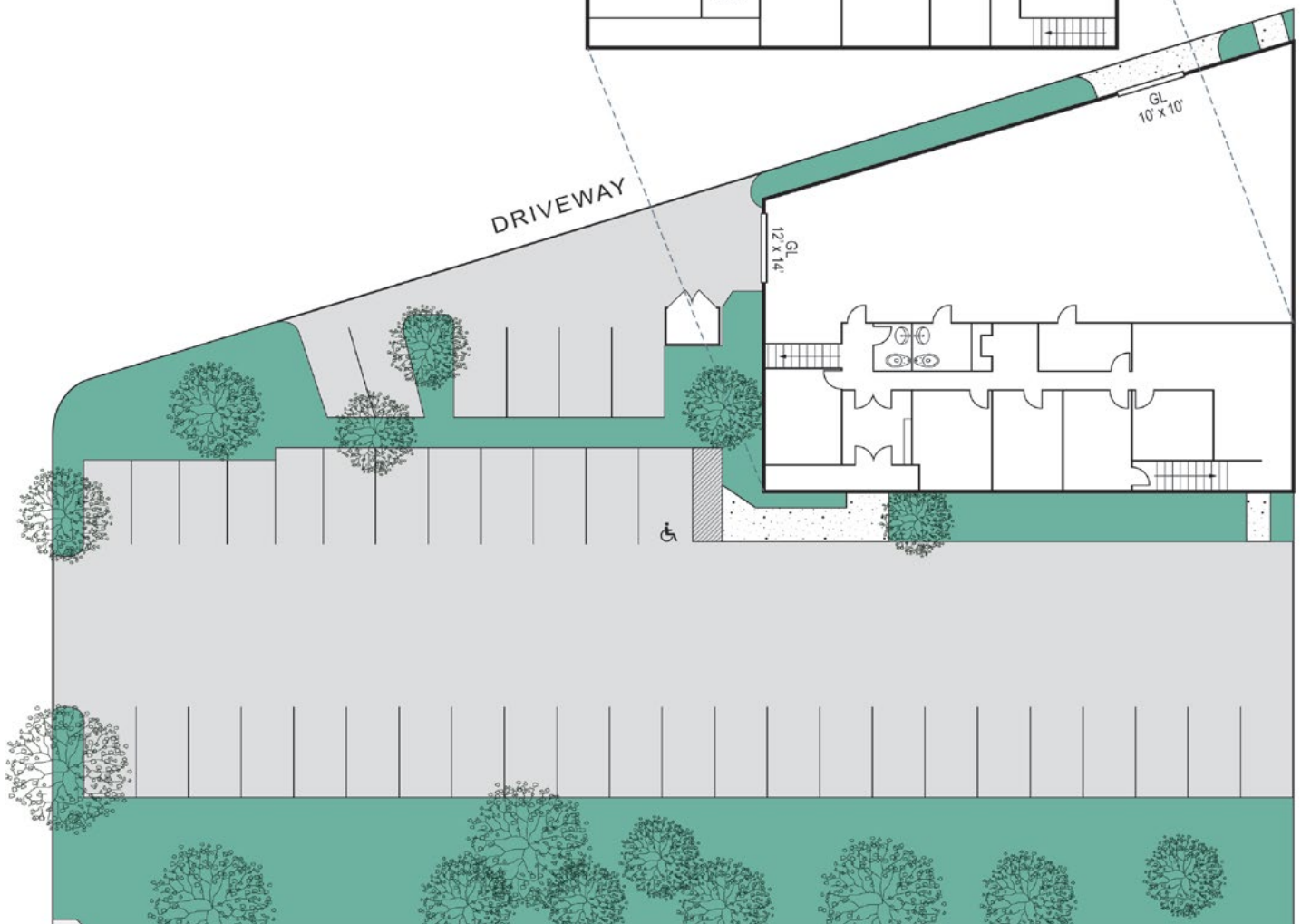
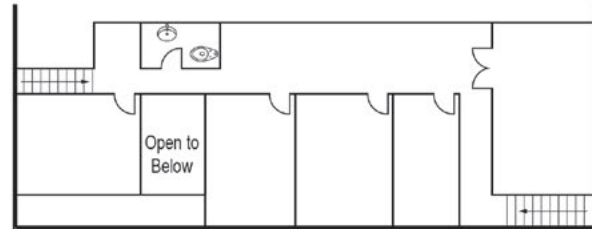
FOR LEASE

±7,970 SF

1295 S. Lewis Street, Anaheim, CA

SITE PLAN

2nd Floor



MIKE VERNICK, CCIM, SIOR

Senior Vice President

714.935.2354

Lic. #01420885

mvernick@voitco.com

Voit
REAL ESTATE SERVICES

HV HEFNER
VERNICK
TEAM

2400 E. Katella Ave., Suite 750, Anaheim, CA 92806 • 714.978.7880 • 714.978.9431 Fax

www.VoitCo.com

Licensed as Real Estate Broker(s) and Salesperson by the CA Bur of Real Estate. The information contained herein has been obtained from sources we deem reliable. While we have no reason to doubt its accuracy, we do not guarantee it. ©2017 Voit Real Estate Services, Inc. All Rights Reserved. License #0133376.