

# FOR LEASE ±8,780 SF

## INDUSTRIAL BUILDING

1540 S. Lewis Street, Anaheim



### Property Feature

- ±8,780 Square Foot High Image Building
- ±5,672 Square Feet Class A Office Improvements (Modified to Suit - See Reverse Plan)
- Fantastic Anaheim Stadium Location
- 19 Parking Stalls (2.16:1 Ratio)
- One (1) 10' x 12' Ground Level Loading Door
- 16' of Minimum Warehouse Clearance
- 400 Amps of Power (Verify)
- Fire Sprinklers
- Built in 1993
- Business Park Environment
- High Image Freestanding Building
- Numerous Restaurant Amenities Nearby



#### MIKE VERNICK, CCIM, SIOR

Senior Vice President  
714.935.2354  
Lic. #01420885  
mvernick@voitco.com

#### MIKE HEFNER, SIOR

Executive Vice President  
714.935.2331  
Lic. #00857352  
mhefner@voitco.com

**Voit**  
REAL ESTATE SERVICES

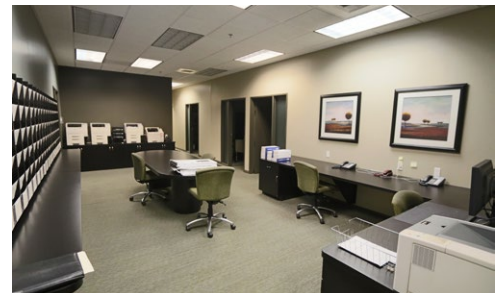
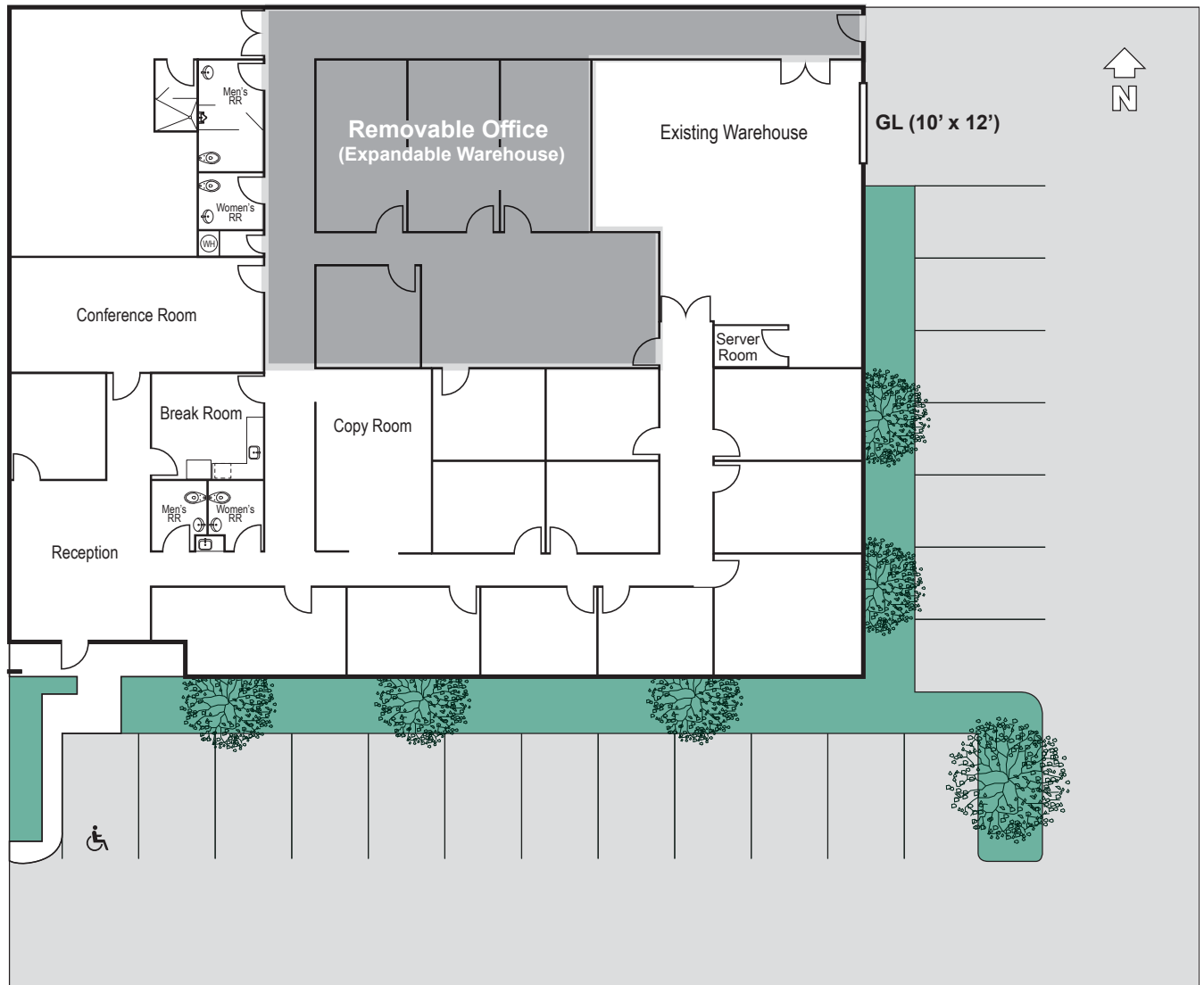
**HV** HEFNER  
VERNICK  
TEAM

# FOR LEASE ±8,780 SF

## INDUSTRIAL BUILDING

1540 S. Lewis Street, Anaheim

### SITE PLAN



#### MIKE VERNICK, CCIM, SIOR

Senior Vice President  
714.935.2354  
Lic. #01420885  
mvernick@voitco.com

#### MIKE HEFNER, SIOR

Executive Vice President  
714.935.2331  
Lic. #00857352  
mhefner@voitco.com

**Voit**  
REAL ESTATE SERVICES

**HV** HEFNER  
VERNICK  
TEAM

2400 E. Katella Ave., Suite 750, Anaheim, CA 92806 • 714.978.7880 • 714.978.9431 Fax

Licensed as Real Estate Broker(s) and Salesperson by the CA Bur of Real Estate. The information contained herein has been obtained from sources we deem reliable. While we have no reason to doubt its accuracy, we do not guarantee it. ©2018 Voit Real Estate Services, Inc. All Rights Reserved. License #0133376.

www.VoitCo.com