

# FOR LEASE ±3,184 Sq. Ft.

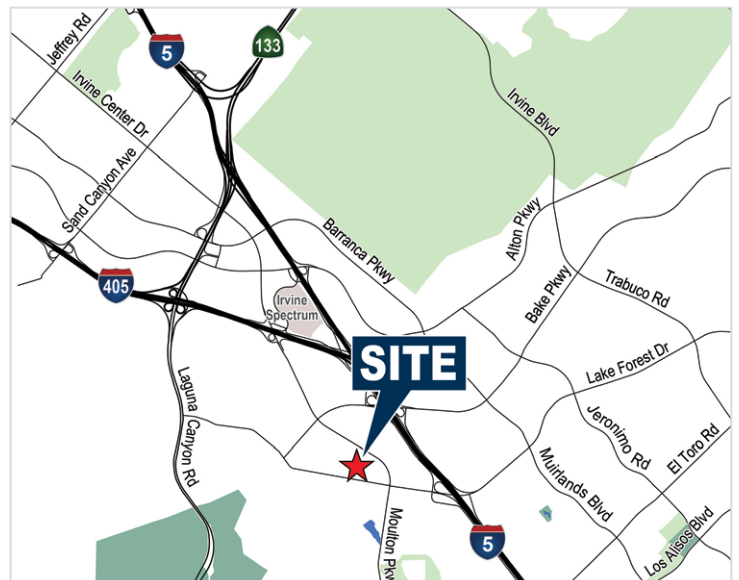
## INDUSTRIAL R&D UNIT

52 Maxwell, Irvine, CA



### Property Features

- ± 3,184 Sq. Ft. Industrial Unit
- ± 1,935 Sq. Ft. of Above Standard Office
- ± 1,249 Sq. Ft. Warehouse
- 22' Minimum Warehouse Clearance
- Constructed in 2006
- 225 Amps of 277/480 Volt (Verify)
- Fire Sprinklers
- One (1) 12' x 14' Ground Level Door
- Full Glass Walls in Office
- Prestigious Location in the Irvine Spectrum Submarket
- 3:1000 Parking (10 Stalls - 2 of Which Are Reserved)
- Excellent Access to 5, 405 and 133 Freeways
- \$1.35 PSF NNN Plus \$0.44 NNN Expenses



### MIKE VERNICK, CCIM, SIOR

Senior Vice President, Partner

714.935.2354

Lic. #01420885

mvernick@voitco.com

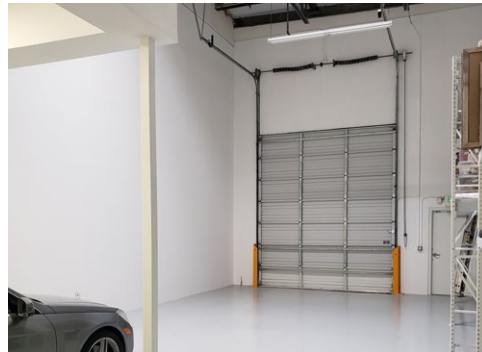
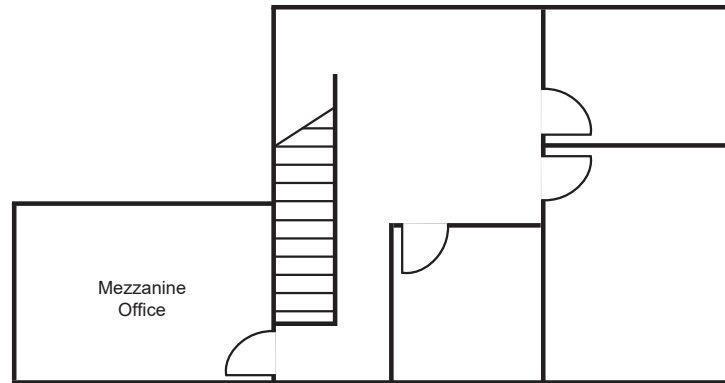
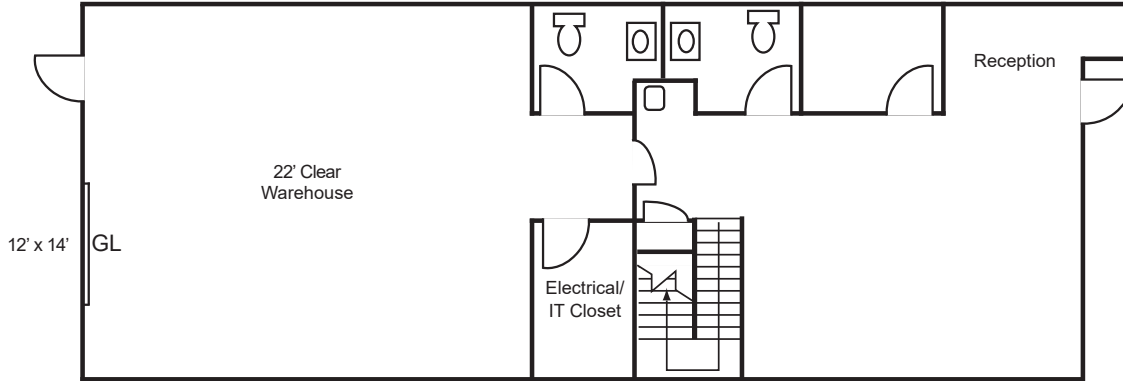
**Voit**  
REAL ESTATE SERVICES

**HV** HEFNER  
VERNICK  
TEAM

# FOR LEASE ±3,184 Sq. Ft.

## INDUSTRIAL R&D UNIT

52 Maxwell, Irvine, CA



### MIKE VERNICK, CCIM, SIOR

Senior Vice President, Partner

714.935.2354

Lic. #01420885

mvernick@voitco.com

**Voit**  
REAL ESTATE SERVICES

**HV** HEFNER  
VERNICK  
TEAM

2400 E. Katella Ave., Suite 750, Anaheim, CA 92806 • 714.978.7880 • 714.978.9431 Fax

[www.HefnerVernickTeam.com](http://www.HefnerVernickTeam.com)

Licensed as Real Estate Broker(s) and Salesperson by the CA Bur of Real Estate. The information contained herein has been obtained from sources we deem reliable. While we have no reason to doubt its accuracy, we do not guarantee it. ©2018 Voit Real Estate Services, Inc. All Rights Reserved. License #0133376.