

# FOR LEASE ±4,132 SF

231 E. Palais Street, Anaheim, CA



## HIGH-IMAGE CREATIVE OFFICE/SHOWROOM SPACE

### Property Features

- 4,132 Sq. Ft. Creative Office/Showroom
- Fully Refurbished, Modern Design Interior
- Two (2) Large Fenced Yard Areas
- 3:1 Parking Ratio
- Desirable Platinum Triangle Location
- Oversized 22,499 Sq. Ft. Parcel
- General Commercial Zoned (C-G)
- Multiple Uses Accepted
- Immediate Access to the 5, 57, and 22 Freeways



**MIKE HEFNER, SIOR**  
Executive Vice President  
714.935.2331  
Lic. #00857352  
mhefner@voitco.com

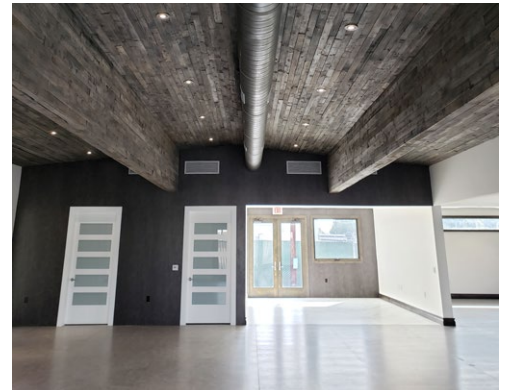
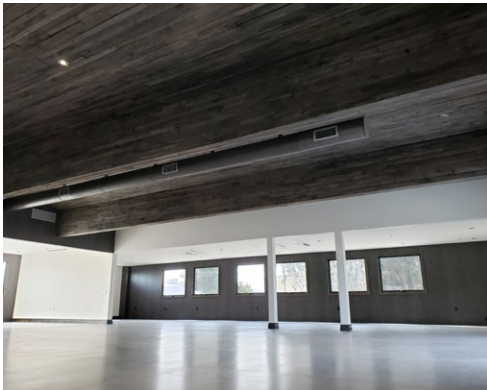
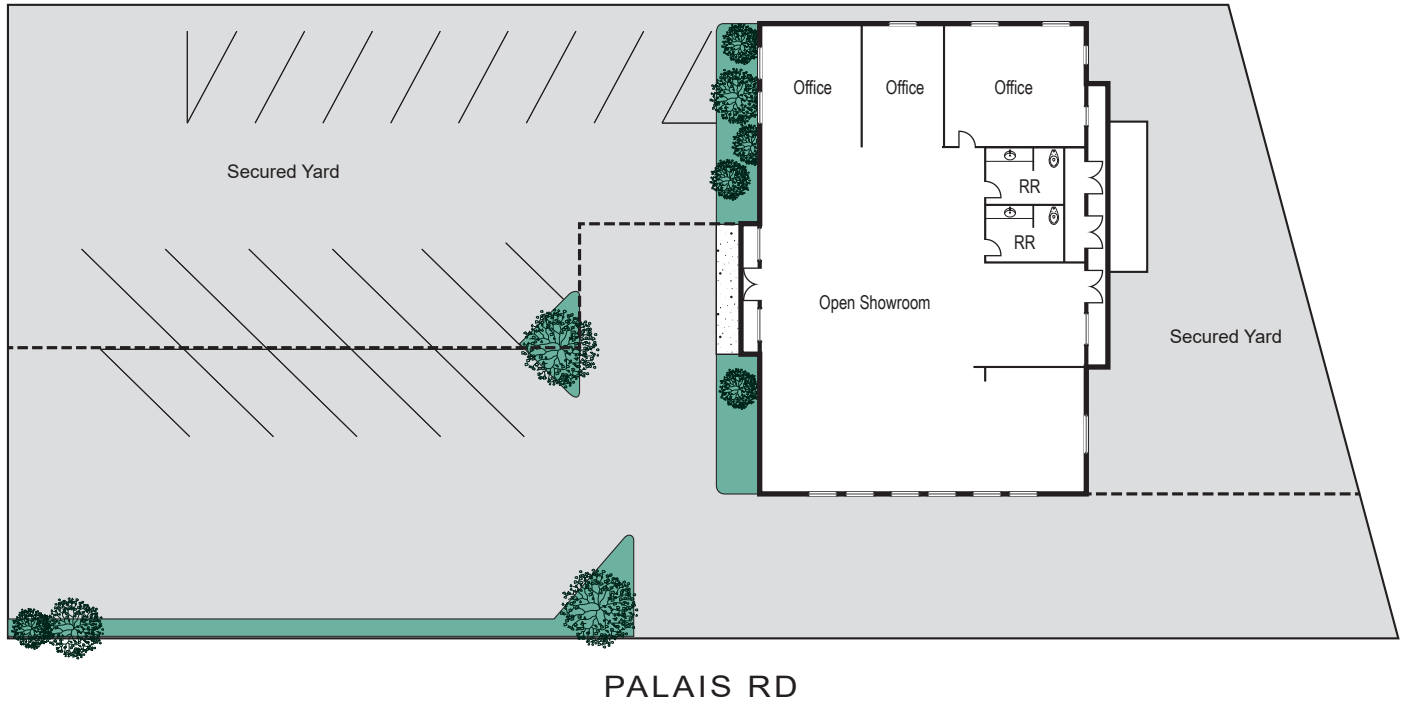
**MIKE VERNICK, CCIM, SIOR**  
Senior Vice President  
714.935.2354  
Lic. #01420885  
mvernick@voitco.com

**Voit**  
REAL ESTATE SERVICES

**HEFNER  
VERNICK  
TEAM**

# FOR LEASE ±4,132 SF

231 E. Palais Street, Anaheim, CA



**MIKE HEFNER, SIOR**  
Executive Vice President  
714.935.2331  
Lic. #00857352  
mhefner@voitco.com

**MIKE VERNICK, CCIM, SIOR**  
Senior Vice President  
714.935.2354  
Lic. #01420885  
mvernick@voitco.com

**Voit**  
REAL ESTATE SERVICES

**HV** HEFNER  
VERNICK  
TEAM

2400 E. Katella Ave., Suite 750, Anaheim, CA 92806 • 714.978.7880 • 714.978.9431 Fax

Licensed as Real Estate Broker(s) and Salesperson by the CA Bur of Real Estate. The information contained herein has been obtained from sources we deem reliable. While we have no reason to doubt its accuracy, we do not guarantee it. ©2019 Voit Real Estate Services, Inc. All Rights Reserved. License #01991785.

www.VoitCo.com  
www.HefnerVernickTeam.com